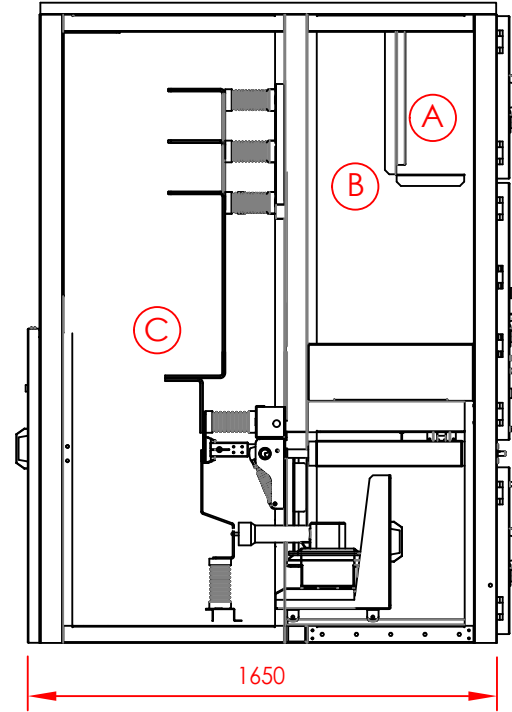
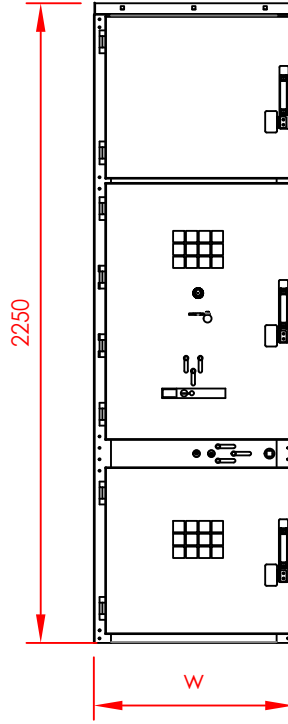
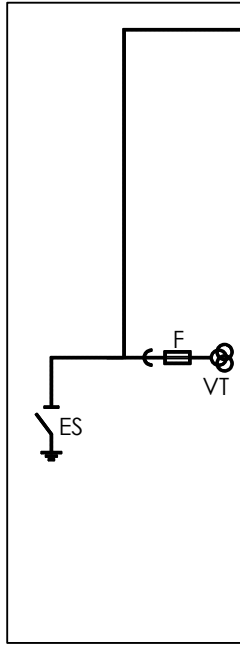


12kV Bus Metal-Clad Switchgear for Protection Transformer
12kV Trafo Koruma Hücresi



12kV	630-1250A	2000-2500A	2500-3150A
w	700	850	1100

- (A)** LOW VOLTAGE COMPARTMENT
ALÇAK GERİLİM BÖLMESİ
- (B)** CIRCUIT BREAKER COMPARTMENT
KESİCİ BÖLMESİ
- (C)** BUS-BAR COMPARTMENT
BARA BÖLMESİ